



# BGPS

# Curriculum and Assessment

2 January 2024



**Empowered Learners**  
Persons of Strength & Character

# Content

01

*Learning  
Dispositions*

02

*Holistic  
Assessment*

03

*Learning  
Outcomes*

04

*Supporting your  
child*

05

*Learning with  
Technology*



**Empowered Learners**  
Persons of Strength & Character

# Content

01

*Learning  
Dispositions*

02

*Holistic  
Assessment*

03

*Learning  
Outcomes*

04

*Supporting your  
child*

05

*Learning with  
Technology*



**Empowered Learners**  
Persons of Strength & Character

**Knowledge  
and skills**

**Physical and Health  
Education**

**Learning  
Dispositions**

**Mother  
Tongue**

**Art**

**Mathematics**

**Social Studies**

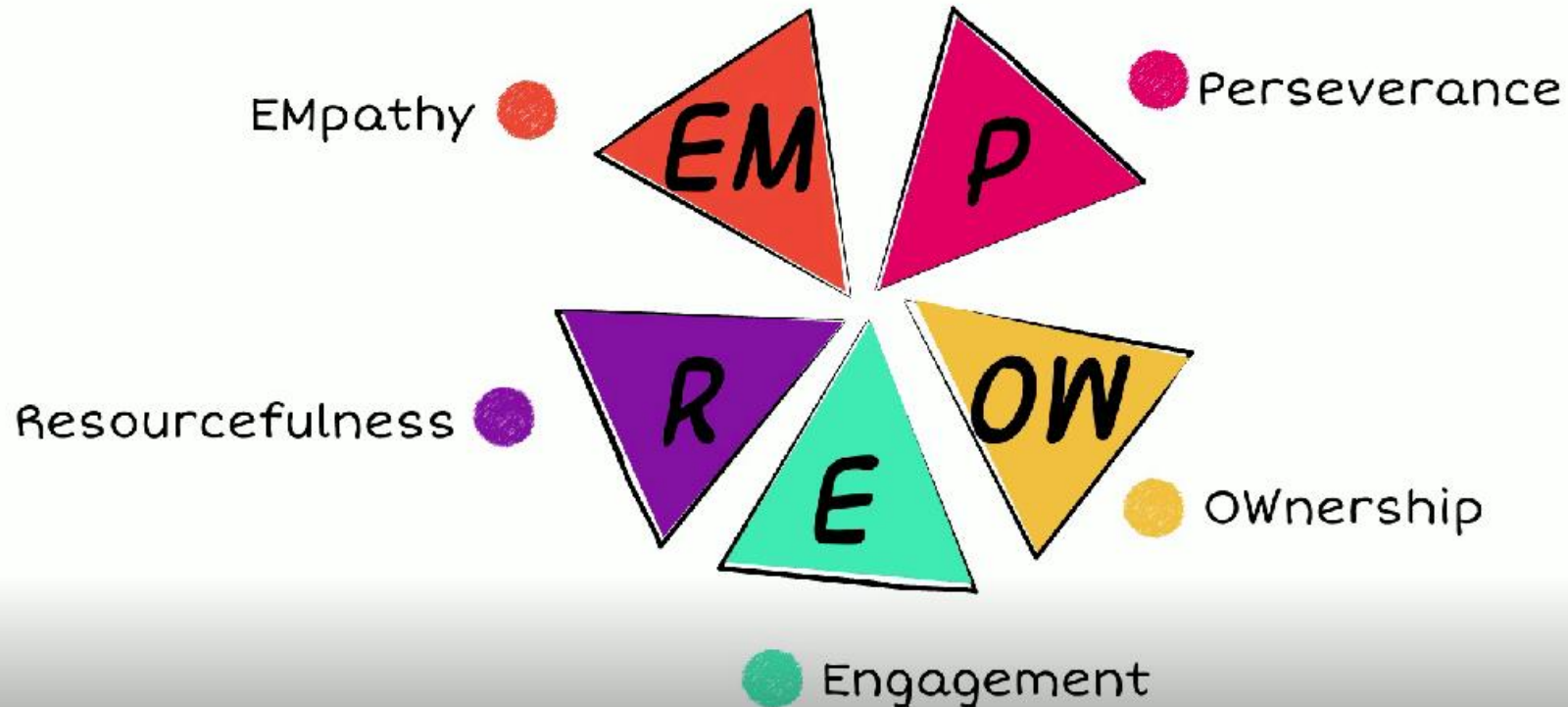
**English**

**Music**



# BGPS Learning Dispositions- EMPOWER


## BGPS LEARNING DISPOSITIONS



# Keeping you informed

- Semestral Curriculum Update through Parents Gateway
- Parent-Child-Teacher Conference (PCTC)






**BEDOK GREEN PRIMARY SCHOOL**  
 1 BEDOK SOUTH AVE 2 SINGAPORE 469317  
 TEL: 64425416 FAX: 64491491  
*Empowered Learners, Persons of Strength & Character*

BGPS/96/22

---

15 July 2022

Through the Principal 

Dear Parents/ Guardians of Primary 1 students

**SEMESTER 2 CURRICULUM UPDATES FOR PRIMARY 1**

Our curriculum aims to nurture our students holistically so that they are confident, have strong social skills and a good foundation in literacy and numeracy. At Primary 1, learning activities and experiences provide our students with more opportunities to experience success, build their confidence, and instil their desire to learn.

Semestral updates on the curriculum focus and progressive feedback on students' learning activities will be provided throughout the year. Hence, we advise parents/ guardians not to overstress your children with unnecessary preparation.

Kindly be reminded that there are no weighted assessments for Primary 1 students. The topics that will be covered in Semester 2 are as follows:

Date	Subject	Units/ Topics	
		Term 3	Term 4
Semester 2 (27 Jun – 18 Nov)	English Language	Unit 8: Dan's Lost Hat Unit 9: When Baby Sister Came Home Unit 10: Mid-Autumn Festival Unit 11: The First Day of Hari Raya	Unit 11: The First Day of Hari Raya Unit 12: Lazy Duck Unit 13: The King's Cake Unit 14: The Broken Bangle
	Mother Tongue Languages	1. CL Unit 11 to 14 2. ML Unit 6 to 8 3. TL 1B Unit 1 to 8	1. CL Unit 15 to 19 2. ML Unit 9 to 12 3. TL 1B Unit 9 to 14
	Mathematics	Chapter 10: Addition and Subtraction Within 100 Chapter 11: Length Chapter 12: Multiplication	Chapter 13: Division Chapter 14: Time Chapter 15: Money

**Empowered Learners**  
Persons of Strength & Character

# Content

01

*Learning  
Dispositions*

02

*Holistic  
Assessment*

03

*Learning  
Outcomes*

04

*Supporting your  
child*

05

*Learning with  
Technology*



**Empowered Learners**  
Persons of Strength & Character

# Singapore Curriculum Philosophy

## *What we believe about Teaching and Learning*

**Assessment  
as an  
integral part  
of Teaching  
and Learning**

### Summary of the Singapore Curriculum Philosophy

We believe in holistic education, centred on values, social and emotional well-being and character development.

We believe that every child wants to and can learn. We focus on children's learning needs when designing learning experiences.

We believe that learning flourishes

- in caring and safe learning environments,
- when children construct knowledge actively,
- through the development of thinking skills and dispositions, and
- when assessment is used to address children's learning gaps.





# Holistic Assessment

- No graded assessment for lower primary since 2019
- No graded assessment ≠ No assessment
- Assessment integral to teaching and learning
  - Informs teacher on *progress* of student learning for future planning
  - Informs students/ parents on *progress* of learning



SINGAPORE



Schools to cut mid-year exams for several levels; Primary 1 and 2 pupils will not be graded

 Sandra Davie  
Senior Education Correspondent  
The Straits Times

UPDATED: Sep 29, 2018, 12:09pm

SINGAPORE - Mid-year examinations for Primary 3 and 5 and Secondary 1 and 3 students will be scrapped over the next three years, to move away from the narrow focus on

**Empowered Learners**  
Persons of Strength & Character

# Holistic Assessment

- Change in perspective of assessment:
- Beyond pen and paper exercise done in the form of a test
  - Written work
  - Observations of students during performance tasks
  - Interactions between student and teacher
- Assessment does not have to be the end all
  - Closing learning gaps
  - Enriching student learning



# Content

01

*Learning  
Dispositions*

02

*Holistic  
Assessment*

03

*Learning  
Outcomes*

04

*Supporting your  
child*

05

*Learning with  
Technology*



**Empowered Learners**  
Persons of Strength & Character

# Learning Outcomes (LO)

Provided by  
MOE

Aligned with  
what students  
learn

LO progress for  
all subjects

Qualitative  
descriptors are  
used



**Empowered Learners**  
Persons of Strength & Character

# Reporting Student Learning Progress

Qualitative Descriptors	What it Means
Accomplished	Strong understanding and application of concepts and skills
Competent	Good understanding and application of concepts and skills
Developing	Basic understanding and application of concepts and skills
Beginning	Minimal understanding and application of concepts and skills



# Content

01

*Learning  
Dispositions*

02

*Holistic  
Assessment*

03

*Learning  
Outcomes*

04

*Supporting your  
child*

05

*Learning with  
Technology*



**Empowered Learners**  
Persons of Strength & Character

# Supporting your child

## *Importance of positive role-modelling from parents*

- Teachable moments
- Developing literacy
- Learning through play
- Understanding your child's learning needs and styles



**Empowered Learners**  
Persons of Strength & Character

# Teachable moments

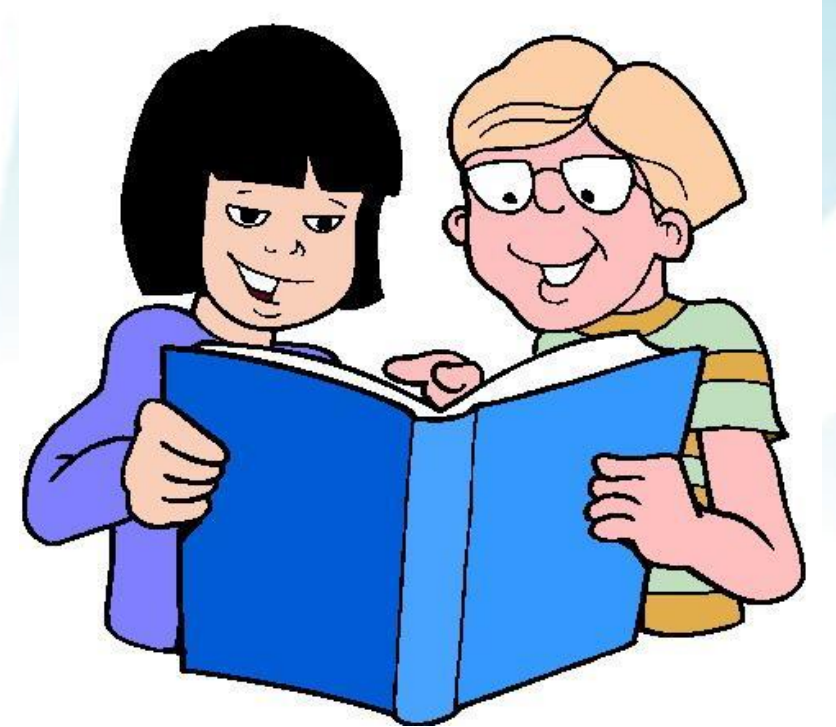
- Trip to supermarket- A chore or an enriching learning experience?
- Examples of learning that could take place in a supermarket
  - Plan a menu within a budget (e.g. making a sandwich)
  - Reading and identifying names of items and brands
  - Sensing of length/ mass/ volume of items
  - Comparison by price/ mass/cheaper/expensive/ healthier choice





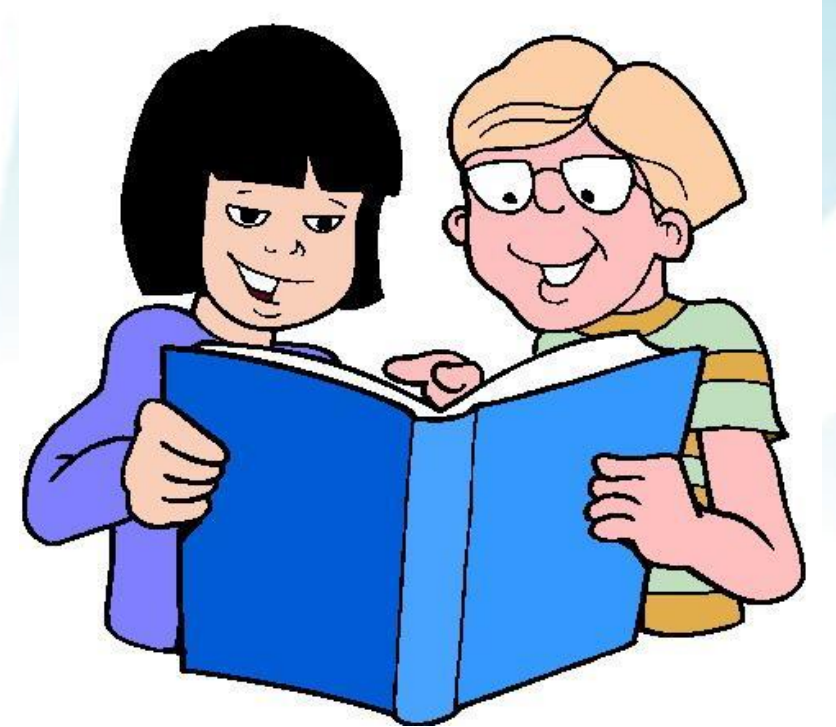
# Developing Literacy - *Cultivating a love for reading*

- Choose Engaging Books
- Create a Reading Routine
- Make it Interactive
- Use Props and Visual Aids
- Choose their own books in library



# Developing Literacy - *Cultivating a love for reading*

- Incorporate Technology
- Be a Role Model
- Celebrate Achievements
- Make Reading Fun



# Developing Literacy - *Providing a literacy-rich environment*



- **Home support**

- Provide reading, listening and viewing materials at home e.g., listening to stories, watching educational programmes in English or Mother Tongue Languages
- encourage your child to share with their learning experiences in school with you and have them use the language

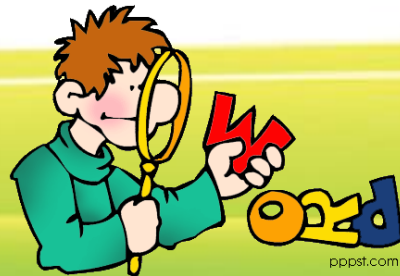
- **Activate child's interest**

- show your child that you believe reading and learning are both enjoyable and useful in your daily life
- make use learning resources around you to engage your child in conversation

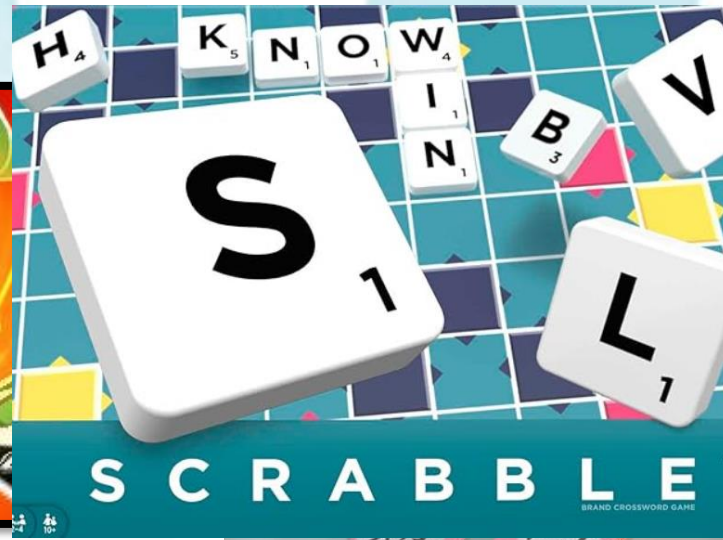
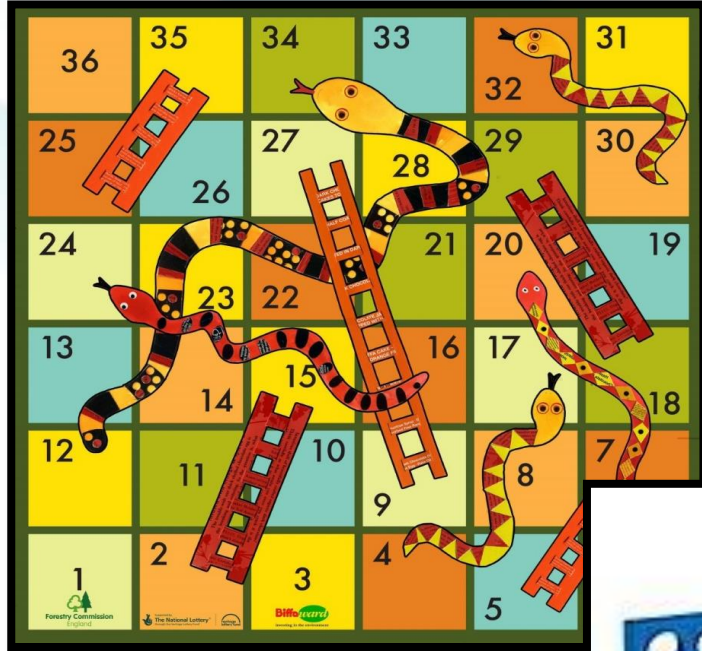


# Learning through play - *Games to develop literacy*

- Playing language games like word scavenger hunt or games and activities on Student Learning System (SLS).
- Reading aloud a book and asking your child to identify words beginning with the same sound. For example, looking for words with the 'p' sound – *pancake, pick, put, police, pat, etc.*
- Using flashcards /Apps to learn and revise Chinese characters. E.g., 字宝宝, 词语接龙



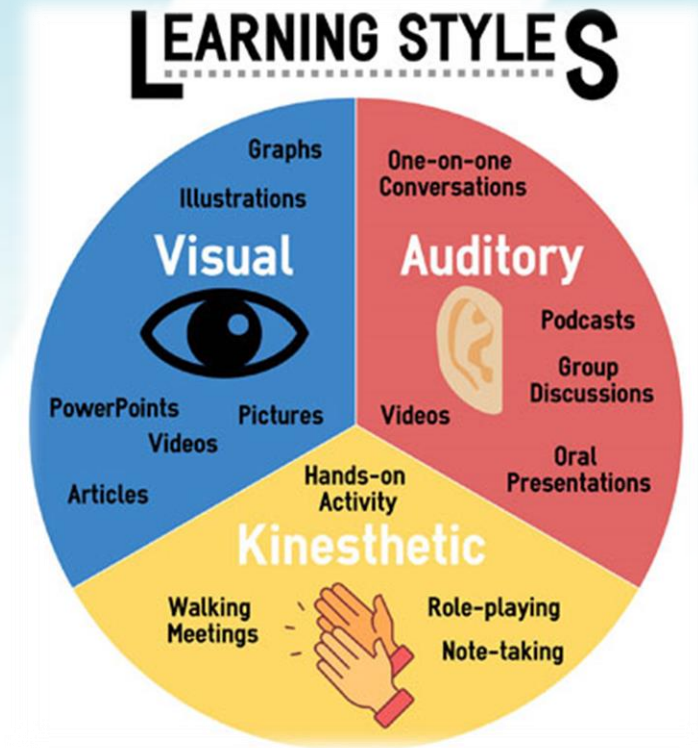
# Learning through play - Games to develop logical thinking and problem-solving skills, or vocabularies building



Learners  
Math & Character

# Understand Your Child's Learning Needs and Style

- Understanding your child's learning needs and style is crucial for providing them with effective support and encouragement. Here are some tips to help you understand and accommodate their learning needs:

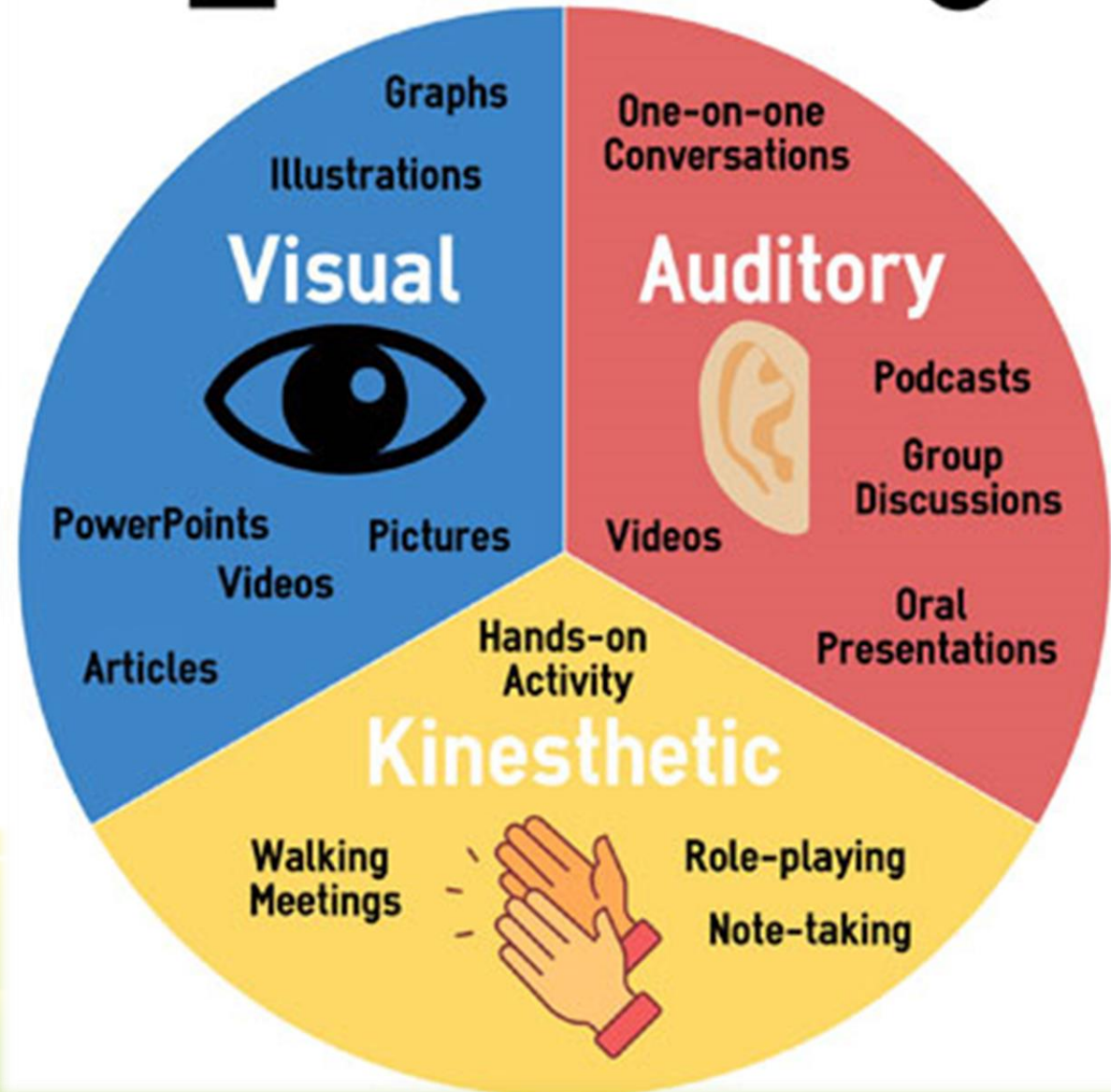


# Understand Your Child's Learning Needs and Style

- Observe and Listen
- Identify Their Strengths and Weaknesses
- Be Flexible
- Provide a Variety of Learning Experiences



## LEARNING STYLES

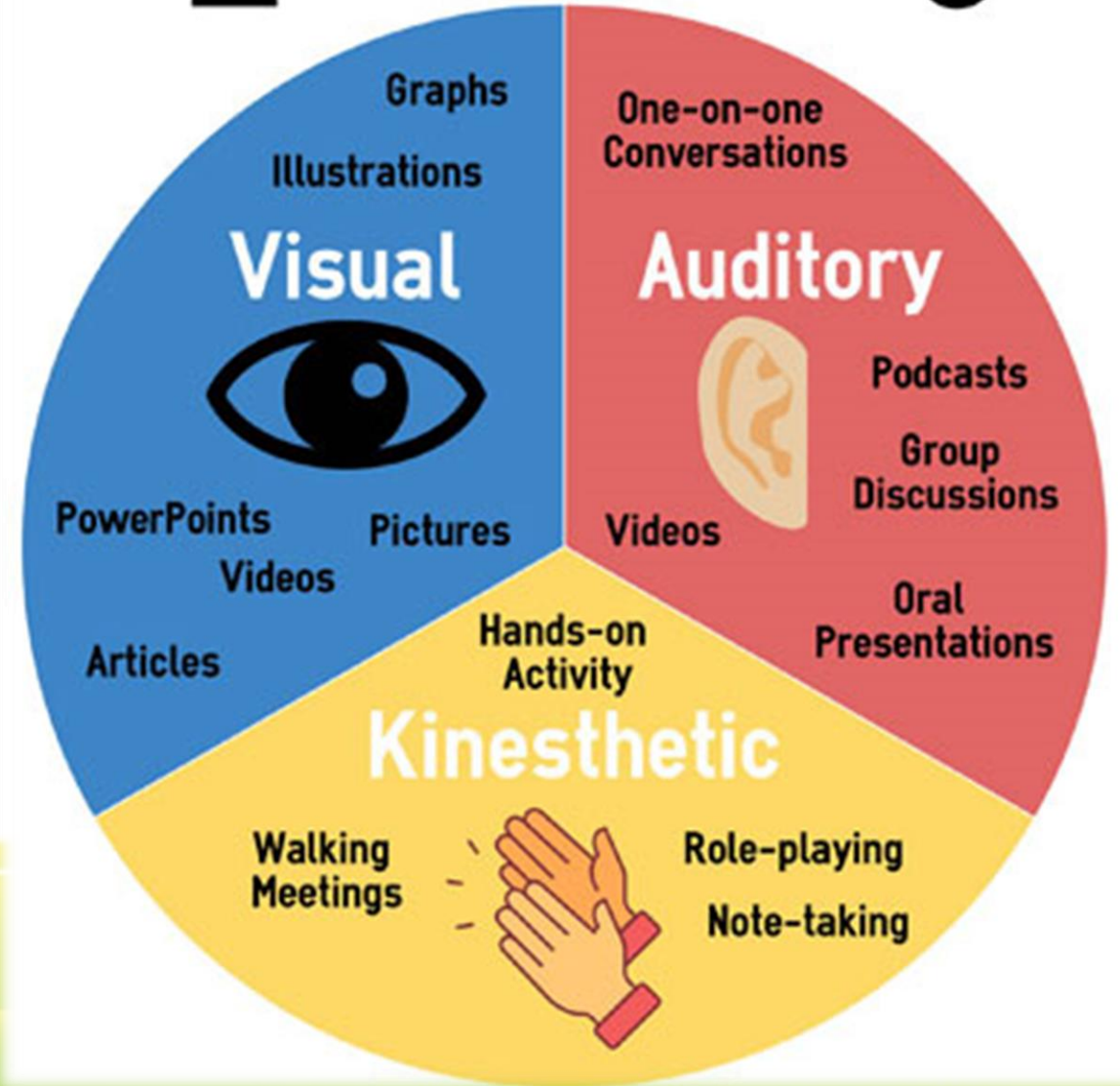


# Understand Your Child's Learning Needs and Style

- Encourage Independence
- Communicate with Teachers
- Be Patient and Supportive



## LEARNING STYLES





# Mendaki Tuition Scheme (MTS)

## Who can join?

- Singaporean and Singapore Permanent Residents (All races)
- Registration for new students:  
by 31 January 2024



Scan to register

A promotional poster for the Mendaki Tuition Scheme (MTS). The background is yellow. At the top, there are two banners: an orange one for 'FOR CURRENT STUDENTS 16 OCT 2023 - 31 JAN 2024' and a blue one for 'FOR NEW STUDENTS 6 NOV 2023 - 31 JAN 2024'. In the center, two young boys in blue MTS polo shirts are shown. To the right, a white box with a blue border contains the text 'Quality and affordable tuition at just \$10\* per student/year'. Below this, it says '\*Terms and conditions apply. Visit www.mendaki.org.sg for more information.' At the bottom right, there are logos for 'MENDAKI' and 'MENDAKI TUITION'.



**Empowered Learners**  
Persons of Strength & Character

# Content

01

*Learning  
Dispositions*

02

*Holistic  
Assessment*

03

*Learning  
Outcomes*

04

*Supporting your  
child*

05

*Learning with  
Technology*



**Empowered Learners**  
Persons of Strength & Character

***“Do I need to buy a learning device for my child?”***



**Empowered Learners**  
Persons of Strength & Character

# Learning Devices used in School



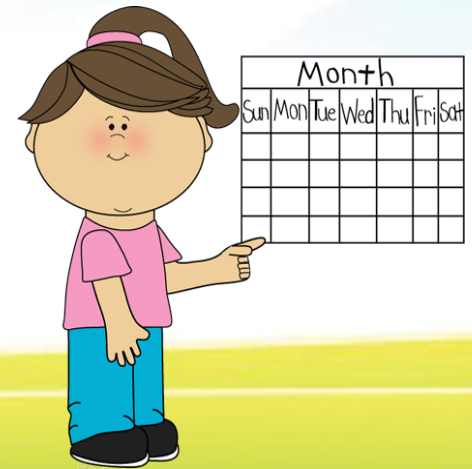
iPads



Laptops

# Primary 1 Level Home Based Learning (HBL) Days in 2024

- Term 2 Week 1 Friday (22 March)
- Term 3 Week 6 Monday & Tuesday (29 & 30 July)
- Term 4 Week 3 Thursday & Friday (26 & 27 July)



# BGPS Home Based Learning (HBL) Portal

Main Platform of Learning:



BGPS HBL 2023\*

## BGPS HBL 2023

28 SEPTEMBER TO 3 OCTOBER 2023

PLEASE REFER TO THE SCHEDULE BELOW AND COMPLETE ALL YOUR ASSIGNED TASKS. THANK YOU.

PRIMARY 1

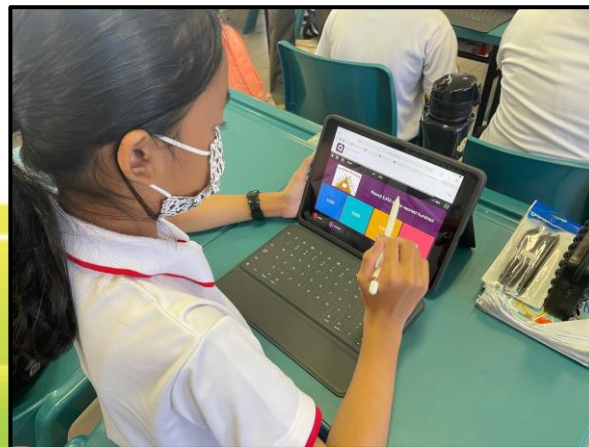
PRIMARY ONE LEVEL																						
Day/Date	0800 - 0815	0815 - 0830	0830 - 0845	0845 - 0900	0900 - 0915	0915 - 0930	0930 - 0945	0945 - 1000	1000 - 1015	1015 - 1030	1030 - 1045	1045 - 1100	1100 - 1115	1115 - 1130	1130 - 1145	1145 - 1200	1200 - 1215	1215 - 1230	1230 - 1245	1245 - 1300	1300 - 1315	1315 - 1330
3-Oct (Mon)	Morning Check-in (via SLS)	MA			BREAK TIME		PE	EL				BREAK TIME	MU	MT			BREAK TIME	ART				

1 INTEGRITY

1 RESPECT

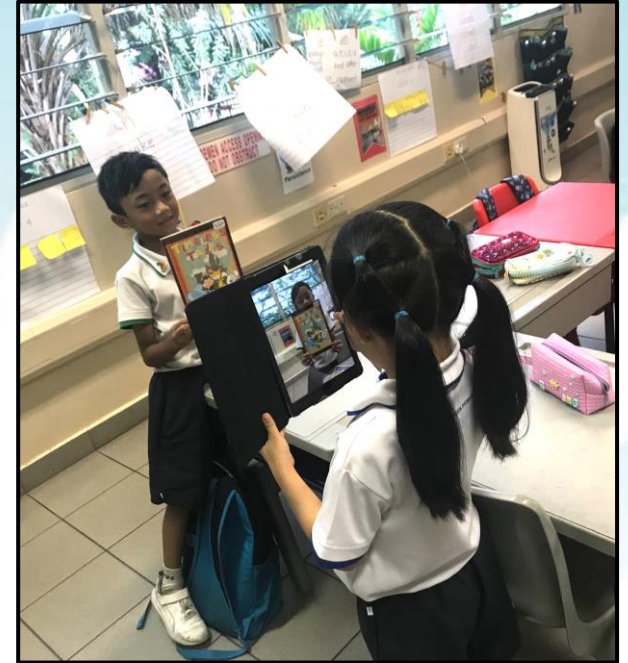
1 RESPONSIBILITY

# ICT-enriched Learning Experiences in our Classrooms



# Examples of digital skills that your child will have opportunities to learn:

- Take photos / record audio clips using iPads
- Upload photos/voice-record onto Student Learning Spaces (SLS)
- Post responses and comment of their peers' posts on web-based applications
- Touch typing





# Technology Tools which your child may be exposed to:

## Baseline Applications & Productivity Tools



## Learning & Interaction




# 3Cs to Support your Child's Learning with Technology


- **Cultivate good habits**
  - Keep passwords well
  - Handle ICT gadgets/devices carefully
  - Teach your child to be respectful online
  - Manage screen time
- **Child should own his/her learning**
  - Guide and support alongside your child
  - Manage failures & stay resilient

HOME-BASED LEARNING PORTAL ACCESS

**Method 1:**  
Go to [www.bedokgreenpri.moe.edu.sg](http://www.bedokgreenpri.moe.edu.sg)



**Method 3:**




Scan the QR Code to access the Home-based learning site

Click on the [Home-based Learning](#) button.

Click on the [Home-based Learning](#) button to access your [Home-based Learning Portal](#).

**USERS & PASSWORDS**



**SSOE2**  
ENHANCING T&L WITH ICT

SINGAPORE  
STUDENT  
LEARNING  
SPACE

**SLS**

Username: \_\_\_\_\_

Password: \_\_\_\_\_

---

**Student ICON**

Username: \_\_\_\_\_


Password: \_\_\_\_\_

---

Other Apps: \_\_\_\_\_

Username: \_\_\_\_\_

Password: \_\_\_\_\_



**eZishi**

Username: \_\_\_\_\_

Password: \_\_\_\_\_


---

Other Apps: \_\_\_\_\_

Username: \_\_\_\_\_

Password: \_\_\_\_\_

Other HBL Support Guides and Instructions can also be found on the HBL Portal.



**Student Learning Space Helpdesk**  
Tel no: (65) 6702 6513

**Operating Hours**  
Mondays to Fridays: 4 p.m. — 9 p.m.  
Saturdays: 9 a.m. — 9 p.m.  
\*Closed on Sundays & Public Holidays  
Email: [helpdesk@sls.ufinity.com](mailto:helpdesk@sls.ufinity.com)

34



# 3Cs to Support your Child's Learning with Technology

- Connect with us!

- Download and activate communication and learning Apps for you/your child



- Follow us on Social Media for school event updates



「SCAN ME!」



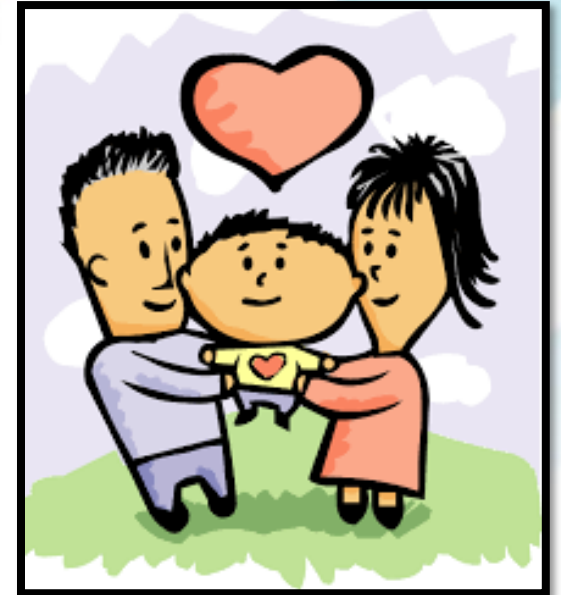
**Empowered Learners**  
Persons of Strength & Character

**2024**  
**PRIMARY 1**  
ICT GUIDE FOR  
PARENTS

The complex block contains a header with the school's motto and logo. Below is a collage of five photographs showing children in a classroom engaged in various activities like pointing, reading, and using a microscope. At the bottom, the text "2024 PRIMARY 1 ICT GUIDE FOR PARENTS" is displayed.

# In conclusion

- Let's be involved and supportive
  - Our children need support and encouragement as they journey along
- Making mistakes as part and parcel of learning, let's help make such learning experiences a positive one
  - E.g Doing lots of worksheets and assessment books could create negative association with school



# Thank You



**Empowered Learners**  
Persons of Strength & Character